



# BROADFORD SECONDARY COLLEGE NEWSLETTER

No 18

10th November 2023

## COMING EVENTS

### November

**Mon 13th**

2024 Yr 12 Orientation

**Wed 16th**

TPEA Excursion

**Mon 20th**

Yr 10 Exams Begin

**Fri 24th**

2024 Yr 11 Orientation

2023 Yr 11 End of Year  
Celebration

### December

**Fri 1st**

Yr 10 End of Year  
Celebration

**Tues 5th**

2024 Yr 7 Information  
Evening

**Wed 6th**

Yr 9 Luna Park  
Excursion

Yr 7&8 SPAC

**Tues 12th**

2024 Yr 7 Orientation  
Day  
(Statewide)

Yr 8 Surf Camp

**Wed 20th**

Last Day of School  
Finish 1.30pm

## PRINCIPAL'S REPORT

Our Year 12 VCE students are currently sitting their VCAA exams in the school hall. From all reports, students are managing these well and all other students are mindful of the need to be quiet in this area. Our Year 11 students will commence orientation into Year 12 Monday. They will start their new classes and learn what this entails, including the content, assessment requirements and be given holiday homework. I highly encourage all students to complete this homework and to read the English novels over the summer break. Experience shows that students who complete these tasks perform better throughout the year and score better results.

As mentioned previously Mr Reno Lia has retired from BSC and I thank him for the work he contributed to our school during his time as Assistant Principal – Wellbeing. Mr Matthew Willison will take his place as Assistant Principal, moving forward. I welcome Mr Willison to this prestigious position and look forward to working with him in the area of Wellbeing. Congratulations to Mr Glenn McKenzie who is our staff member of the month for his work on the House boat races earlier this term. This event took place on the school oval and will be renamed the Zwar Regatta after the name of the school oval. Students were very engaged in the construction and decoration of the boats and even more so on race day. It is these types of events that improve student engagement and connectedness to school.

Tania Pearson  
Principal

Pinniger Street

PO Box 108

Broadford 3658

Tel: 03 5784 1200

<https://broadfordsc-vic.compass.education/>

Principal: Ms Tania Pearson



Broadford Secondary College

## SENIOR ART AND TECHNOLOGIES EXHIBITION

**DATE:** Wednesday, 15<sup>th</sup> of November

**TIME:** 4:30 – 5:30pm

**VENUE:** John Patterson Gallery, BSC

Showcasing a variety of works and folios from the senior Arts and Technologies students.

Light refreshments provided.

### **2023 End of Year Activities for year 7-9 students**

A big thank you to all year 7-9 students (and those who have encouraged them) who have submitted their EOYA (End of Year Activities) choices. Most students have now been allocated their activities and the final list can be found near the Forum for everyone to check.

**If your child hasn't signed up for activities and is planning to be at school for any of the three days, please ensure that they see me as soon as possible so they are able to enjoy the activities on offer.** Naturally, if you have a year 8 student attending the Surf camp, they will not be required to complete the form as both are running during the same week.

The permission forms will soon be accessible via Compass. Please check your child's profile to see if they have selected an activity that requires a parent's permission and complete it if you are happy for them to attend. If an event requires payment, eg. Golf, this will also be able to be done electronically.

A reminder that for Friday, 15<sup>th</sup> Dec. the planned excursion is for all year 7-9 students to go shopping at Northland for the day (the cost of buses will be covered by the school). Please note that there will be no other activities running at school on that day.

If your child does not make any selections, then turns up on the day, they will be allocated to a group based on available vacancies.

If you have any questions or concerns, please do not hesitate to contact me.

## **LOCKER ROTATIONS**

### **PLEASE NOTE:**

- Locker rotations will begin next week and will take a number of weeks to complete.
- Please understand that there will be some disruptions to locker locations during this time.
- We ask that students only bring to school what is necessary, as they may have to carry their bag for the day. Thanks for your understanding.

## *Attendance Information*

If you require your student to depart school early, can you please provide a *signed note* for the student to hand to their teacher, this will enable them to leave the classroom and make their way to the General Office.

Parents are asked to collect their student from the General Office and sign them out via the *Compass Kiosk*.

Can parents ensure that all attendance be updated before 12pm on the day of the student's absence.

There are several ways to do this.

Call the schools attendance line- **57841200 – extension 1.**

Call the general office- **57841200.**

Log onto Compass and update attendance- **on homepage find + add attendance note-then add reason, date, and time.**

Email [absences@broadfordsc.vic.edu.au](mailto:absences@broadfordsc.vic.edu.au) or [broadford.sc@education.vic.gov.au](mailto:broadford.sc@education.vic.gov.au)

An unexplained absence message is sent to families at 12.45pm daily- **follow the link to add attendance note.**

Late arrivals to school need to enter via the General Office and sign in on the *Compass Kiosk* using their *Compass Card*, we also ask that you provide a written note to explain why the student is late. Students who can't use the *Compass Kiosk* are asked to speak to the general-office staff and they will sign them in.

Notes and Medical Certificates can be handed to staff in the General Office.

**Thank you.**

## **Child safety and wellbeing at Broadford Secondary College: information for families and the school community**

The Victorian Government has announced new [Child Safe Standards](#) to further strengthen child safety across organisations, including schools. The new standards recognise the critical importance of families and the broader school community in maintaining and promoting child safety and wellbeing.

Broadford Secondary College has reviewed and updated our child safety policies and procedures to ensure they meet the requirements of the new standards. These are available to view on our school's website, via or at the school's front office].

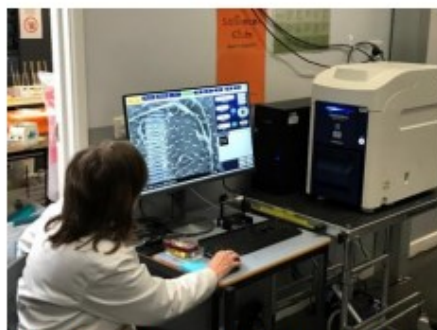
We are committed to continuous improvement in our approach to child safety and wellbeing and welcome feedback from families and members of our school community on ways we can further strengthen our child safety policies, procedures and practices.

If you have any suggestions, comments or questions, please contact the Principal, or one of the Assistant Principals.



## Scanning Electron Microscope visits BSC

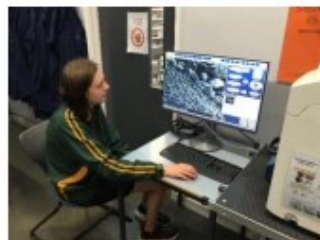
For the last 2 weeks, BSC Science department has hosted a portable scanning electron microscope (SEM) loaned to select Victorian schools this year by GTAC (Gene Technology Access Centre). This precision instrument uses electrons (rather than light) to allow us to view specimens at magnifications many thousand times their normal size; up to an astonishing 30 000 times!! Our Lab Manager Rebecca Russell completed a special training course earlier in the year on how to use the SEM and she also created additional samples for our students to view.



Rebecca Russell operating the SEM (screen view: insect wing)



CJ examining a fly's eye.



Isabella looking at cyclamen stamens.



Sean magnifying pollen on a leaf.

What an amazing opportunity for our students!

Mrs Campbell (Science KLA Leader)

# LIBRARY NEWS

## eBooks are now available.

The library now has eBooks for students and staff to borrow 24/7, including the holidays.

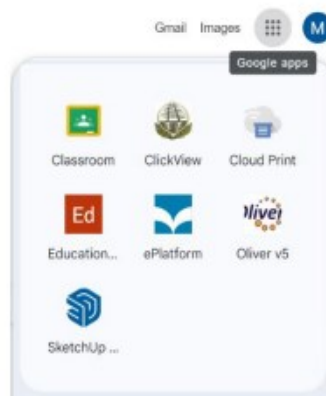
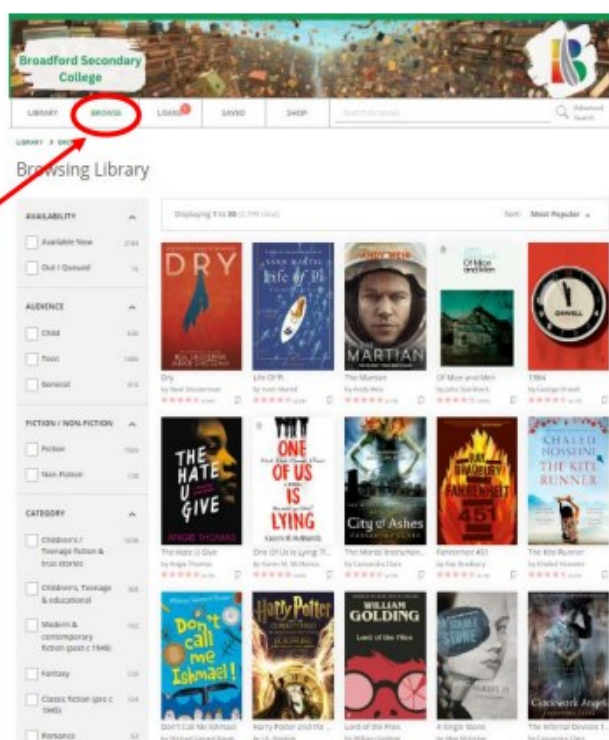


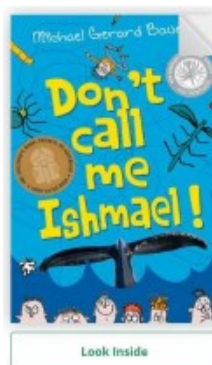
Figure 1 Google apps

To access the eBooks, log into your Google account, open a new tab, click on the Google waffle icon, and scroll down the list of apps until you get to the bottom list (Figure 1), then select the ePlatform icon and log in with your Google account details.



To find genres, go to the Browse tab and choose which category you like to read. Click on a book image to see if you are interested in reading the book.

You can "Look Inside" the book to check if you are interested, and then choose "Borrow" if you want to read it. Only 2 books can be borrowed at a time, and you can access and read the books using any device.



Don't Call Me Ishmael  
By Michael Gerard Bauer

★★★★★ (4.6/5)

Borrow

Loan duration: 2 weeks

"There's no easy way to put this, so I'll say it straight out. It's time I faced up to the truth. I'm fourteen years old and I have Ishmael Leiseur's Syndrome. There is no cure." And there is no instant cure to not fitting in. But that won't stop Ishmael and his intrepid band of misfits from taking on bullies, bugs, babes, the Beatles, debating, and the great white whale in the toughest, the weirdest, the most embarrassingly awful ... and the best year of their lives. By the award-winning author of 'The Running Man'.

Save for later

COPIES

1 available

INTEREST AGE

13+ years

SERIES

Ishmael

Feel free to talk to a librarian during lunch if you need any assistance.

See you in the library.

Ms. Slater



## SUPPORT YOUR CHILD'S EDUCATION WITH 12 MONTHS FREE INTERNET AT HOME

The Australian Government has established the School Student Broadband Initiative to provide free home internet for one year for up to 30,000 eligible families with school-aged students.

The initiative aims to boost education opportunities. NBN Co is leading the rollout of this initiative across the country.

How the School Student Broadband Initiative can help your child

Children who can access online learning at home as part of their education are more likely to engage in classroom activities.

Access to fast internet at home can also support children to build their digital skills, learn how to safely use the internet and take part in a world that is more reliant on digital technology.

### Eligibility

To be eligible, families must:

- \* have a child living at home enrolled in an Australian school in 2023
- \* not have an active National Broadband Network internet service at their home (having a mobile internet service does not affect eligibility)
- \* live in a premises that can access the National Broadband Network through a standard connection. NBN Co will check this for you after you apply
- \* register interest with your school and complete a consent form to be assessed for eligibility.

### How the School Student Broadband Initiative works

If you are eligible, your home internet service will be provided at no cost for one year with a participating internet provider over the National Broadband Network. Each internet provider has its own step-by-step process to get you connected, which may involve you providing identification.

Once you sign up, the internet provider will help you set up your connection. The initiative does not include devices such as a computer or tablet. Other members of your household can use the internet service provided through this initiative.

The one-year period will start from the day your service is activated with your chosen provider. At the end of the one-year period, you will not be placed onto a paid service by your internet provider without your consent. The Australian Government is considering options beyond the one-year free period.

### How to apply

- \* Ask your school for a copy of the School Student Broadband Initiative consent form.
- \* Complete the consent form and return to the school.
- \* NBN Co will use student address details on the consent form to confirm eligibility.
- \* If you are eligible, NBN Co will issue a voucher for your family to use to sign up with a participating internet provider. This will be provided to you by your school.

Please note: NBN Co will review the home address for eligibility. No personal information other than your main home address will be shared with NBN Co. Please see the consent form for details about how personal information will be used.

### Find out more

For more information about the School Student Broadband Initiative, visit <https://www.infrastructure.gov.au>

## Homework Club

**Do you need to complete work for your classes?  
Would you like help from an available teacher?**

**Why not consider attending Homework Club!**

**WHEN:** Mondays Lunchtime 1:15pm – 2:00pm  
Mondays After School 3:30pm – 4:30pm

**WHERE:** Library (no school bags or food)

**Contact Mrs Beedall if you have any questions.**

### CONVEYANCE ALLOWANCE

The conveyance allowance is a form of financial assistance to help families in rural and **regional** Victoria with the cost of transporting their children to their nearest appropriate school/campus.

The conveyance allowance is available to eligible students travelling by public transport, private car and private bus. The conveyance allowance is also available to eligible students whose nearest school is not serviced by a free school bus.

#### Eligibility criteria:

The eligibility criteria varies depending on the type of school attended and where it is located.

Students attending a government or non-government school must:

- Attend their nearest government or non-government school/campus appropriate to their year level at which admission is permissible
- be enrolled at a school/campus outside Melbourne's metropolitan conveyance boundary
- reside 4.8km or more by the shortest practicable route from that school/campus attended
- be of school age (5 to 18 years old at time of application) and reside in Victoria.

**Closing Dates:** Term 4 – 24 November 2023

# Disability Inclusion

## Q and As for parents/carers

### ***Now that Disability Inclusion has started at our school, what do I need to do?***

Our school has three years to complete a Disability Inclusion Profile for most students who receive Program for Students with Disabilities (PSD) funding to support their education. Some Year 7 students may need to complete the profile within their first year.

If your child is part of the PSD, we will work with you to find the most suitable time to complete a Disability Inclusion Profile.

The profile will also be available to a broader group of students with disability.

We will identify students who are not currently part of the PSD, who may benefit from a Disability Inclusion Profile.

If we consider that your child's education will benefit by having a profile, we will contact you.

### ***What is a Disability Inclusion Profile?***

The Disability Inclusion Profile is a written description of a student's goals; educational strengths and needs; and adjustments (i.e., the changes the school makes to help the student with their learning and participation at school). The profile will be completed at a Student Support Group meeting with people who know the student.

The profile will help the school plan how best to assist the student with their learning, participation and engagement at school. It will also be used to determine levels of student-level funding for eligible students. The Disability Inclusion Profile process will replace the Educational Needs Questionnaire that is a part of the current PSD.

Parents and carers will be asked to provide their consent for a profile to be completed for their child.

### ***What is a Student Support Group meeting?***

Some students with disability and their families already participate in Student Support Group meetings. Student Support Groups help students with disability to get the right support at school.

A dedicated Student Support Group meeting will be held to complete the Disability Inclusion Profile for students that require one.

This meeting will run for around 90 minutes. It brings together the people who know most about the student and their learning.

The Department of Education and Training has engaged trained facilitators to help our school, and the families of our students, complete the profile during a meeting.

At the meeting, the group will be asked to talk about the student's strengths, goals and any adjustments that may allow them to learn on the same basis as other students.

This includes agreeing about what level of adjustments are needed for each school-related activity.

Everyone is encouraged to share ideas in the meeting, understand one another's point of view and share responsibility.

Following the profile meeting, the Student Support Group will continue to meet regularly to monitor your child's progress against their goals in their Individual Education Plan.



***Who will be at the Student Support Group meeting?***

An independent facilitator will run the meeting. The meeting can include the following people:

- the student
- their parents/carers
- the teacher who knows the student best\* and the principal or member of the leadership team
- an interpreter if needed
- other people who work with the student, such as an NDIS worker, allied health/social worker or medical professional, therapist, psychologists or similar, or education support staff, can also attend if agreed by the school and the parent/carer.

\*The teacher who attends the profile meeting will consult with the student's other teachers and relevant staff before the meeting so that a full picture of the student's goals, needs and learning adjustments is considered at the meeting.

If you think your child would benefit from having someone else attend the meeting, please talk to Corryn Hicks – *Leading Teacher Disability Inclusion*.

***Can my child attend the meeting?***

Yes. It is important that the student is involved in the profile meeting and is included when decisions are being made about their learning. The student is strongly encouraged to attend in person. If they do not wish to attend, they can provide information to a trusted adult to discuss on their behalf.

Our school will work with students and their families to determine how to include them in the profile process.

The student can express their views in the meeting, or contribute by providing photos, video and audio recordings, drawings and other methods. The department has developed resources, such as the [Student Voice Toolkit](#) and the [Inclusive Student Voice Toolkit](#) to support students with disability to express their views in the meeting.

***How do my child and I prepare for a profile meeting?***

A parent/carer may want to spend time before the profile meeting thinking about their child's strengths, goals, and functional needs (what they need to help them participate and learn at school).

There is a tool on the Department's website to help you with this. Click on [parent voice tool](#) or visit [Disability Inclusion Profile: Resources | education.vic.gov.au](#).

If you would like to prepare for the meeting, the school can also provide you with some questions to answer in advance. It will give you an idea of the sort of questions that will be asked in the meeting and allow time for you and your child to think about it.

***What wellbeing support will my child receive?***

The student's homeroom teacher, year level coordinator and/or wellbeing staff member will be aware of the profile meeting and will be able to support your child in advance.

Some tips to help you support your child are:

- tell them about the meeting and what it is for, who will be there, etc.
- talk positively with them about how the meeting aims to help the school better meet their needs and help them learn

- encourage your child to participate in the meeting, talk about their strengths and needs across all subject areas
- if you have concerns about your child's mental health, start by talking to your child's school. They can help you access a range of supports offered by the department. It is also worth speaking to your family General Practitioner (GP) about your child's mental health.

***What is the parent/carer's role in the meeting?***

At the meeting, parent/carer(s) will be responsible for:

- sharing information about their child's goals, learning, participation, social engagement and experiences at home that are relevant to the way they learn
- sharing information about what has helped their child learn in the past
- supporting the student to attend the meeting (preferable) or, if the student wishes, helping to provide the student's voice in the process, if they do not attend the meeting.
- Parents are also responsible for nominating a support person or advocate, if required.

***Will my child get individualised funding?***

Schools must make reasonable adjustments to ensure students with disability can access and participate in education on the same basis as other students.

Completing a Disability Inclusion Profile does not guarantee that a school will receive individual funding to support a particular student. Individual funding is based on a student's needs and their school setting.

Disability Inclusion has introduced an additional type of funding for schools. This allows the school to make better adjustments for all students with disability. Schools can use this funding to hire teachers or other staff to help plan and deliver adjustments for students, purchase equipment and resources to support learning, provide professional learning for staff and get expert advice.

These adjustments may support students across the whole school or address a student's specific needs.

Even if our school does not receive individual funding to support your child, completing a profile is a valuable way to understand your child's needs and aspirations, and how they will be supported to learn at school.

***Can I see my child's profile?***

Yes. You will be provided with a profile report in the weeks following the meeting. This report will have information about your child's:

- current strengths
- aspirations
- functional needs
- adjustments to the learning environment.

The report does not include details of funding provided to the school to support your child.

Details about the adjustments your child needs are also in their Individual Education Plan. The Student Support Group will also regularly monitor how your child responds to adjustments and whether they are being implemented as intended.

***What happens if I'm not happy with the outcome of the profile meeting?***

You will have the opportunity to discuss your child's profile report at a Student Support Group meeting.

If you have concerns about the adjustments being made for your child, you should discuss this with your child's home group teacher/year level coordinator and/or the school principal.

There is also an appeals process. You can read more about this from [the Department's website](#).

***How often will my child need to have their profile reviewed?***

Your child's profile report will recommend when the profile should be reviewed and how often Student Support Group meetings should happen. A school representative/staff member will contact you when it is time to create or review your child's profile.

It is anticipated that a student will complete 2-3 profiles across their school career.

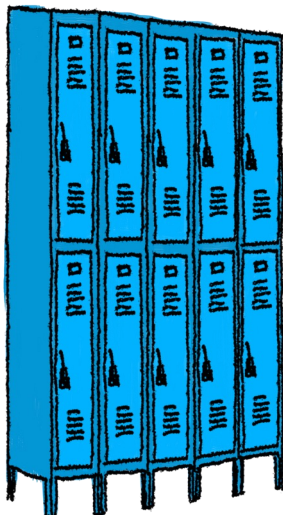
***My child does not have a diagnosed disability and hasn't received support in the past, will they be part of this new process?***

We will identify students who are not part of the current PSD but may benefit from a Disability Inclusion Profile. We will contact you if we think your child will benefit from a profile.

Other students will receive support in other ways. Disability Inclusion has introduced a new, additional type of funding for schools. This allows the school to make better adjustments for all students with disability.

If you have concerns about your child's learning, please speak to your child's year level coordinator. Our school will determine the next steps that are needed to support the student with their learning and participation at school.





## Lockers

All students are allocated a locker when they begin at Bradford Secondary College.

Students are also allocated a combination padlock to use during their time at the College. If by chance the lock will not open due to mechanical error we will replace it with another lock, but any lock that is damaged due to misuse or misadventure or is lost by the student will incur a \$15 replacement fee.

Students are also expected to remain in their allocated locker within their House area.

Student Locker locations are also rotated on a yearly basis.

Uniform ordering  
Now online



<http://bsc.allthingsuniform.getworkwear.com/>

**& like us on Facebook to keep updated**

# KILMORE GOLF CLUB

Anderson Road, Kilmore VIC 3764 (03) 5782 1123

## Try Golf and have a Fun Day

**Kilmore Golf Club**  
**Sunday, November 19,**  
**10am-1pm**

**ALL WELCOME**  
**BRING YOUR FAMILY & FRIENDS**

Putting Competition, Round of Golf:  
 9 Holes – Awards and Prizes

Best Scores in both Adults &  
 Juniors:

Prizes for Nearest the Pin all 9 Holes

We welcome Juniors, Adults,  
 Men and Women; **BUT** only those  
 with **NO** Golf Australia Handicap

**Cost:** Adults \$20, Juniors \$10  
 Includes competition fees and a  
 drink / food voucher

**Pre-Register:**  
[info@kilmoregolfclub.com.au](mailto:info@kilmoregolfclub.com.au)  
 giving your name, phone  
 & email address

**Then Pre-Pay:** Kilmore Golf Club Inc.

**BSB:** 633 000 **A/C:** 147 888 275

**Ref:** trygolf & your name

Limited amount of golf  
 equipment available on loan  
 (with refundable cash deposit)



## PRETTY WOMAN

BRIDAL • BRIDESMAIDS • DEBUTANTE • FORMAL

### *Exclusive Rural* **Debutante and Formal Showcase**

**WEDNESDAY 17TH AND  
 THURSDAY 18TH JANUARY**

**TRAWOOL ESTATE**

- Pretty Woman are bringing their collection of dresses TO YOU
- Coming to an area near you for 2 days only
- Gowns will be available for special order with select pieces available off the rail purchase
- Personalised 45 minute appointments
- Pretty Woman exclusivity: no repeat styles for the same deb ball
- **CHANCE TO WIN YOUR DRESS FOR FREE**

**WEDNESDAY 11AM - 7PM THURSDAY 9AM - 4PM**



SCAN TO BOOK









@prettywomanbridalcroydon 9725 9711 0481 828 78 [www.prettywomanbridal.com.au](http://www.prettywomanbridal.com.au)



# INCLUSIVE SPORT COME AND TRY SESSIONS

**Every Wednesday from 1st November to 6th December 2023**  
**Seymour Sports and Aquatic Centre,**  
**Pollard Street, Seymour VIC 3660**

Come along to the Seymour Sports and Aquatic Centre to try lots of different sports and find out what you like! This is a **FREE** inclusive sporting event.

Wednesday 1st November		Zumba	<b>Under 18's</b> <b>Over 18's</b>	11:30am - 12:30pm 1:00pm - 2:30pm
Wednesday 8th November		Basketball & Wheelchair Basketball	<b>Under 18's</b> <b>Over 18's</b>	11:30am - 12:30pm 1:00pm - 2:30pm
Wednesday 15th November		Athletics	<b>Under 18's</b> <b>Over 18's</b>	11:30am - 12:30pm 1:00pm - 2:30pm
Wednesday 22nd November		Netball & Wheelchair Netball	<b>Under 18's</b> <b>Over 18's</b>	11:30am - 12:30pm 1:00pm - 2:30pm
Wednesday 29th November		Pickleball	<b>Under 18's</b> <b>Over 18's</b>	11:30am - 12:30pm 1:00pm - 2:30pm
Wednesday 6th December		<b>Games Day to celebrate International Day for People with Disability</b>	<b>Under 18's</b> <b>Over 18's</b>	11:30am - 12:30pm 1:00pm - 2:30pm

*For people with disabilities – Maximum 25 people per session – please register.*



This is a COVID-safe, all-ages, alcohol-free event. We aim to make this event accessible and inclusive to all of the community. If you would like to attend this event and have specific access needs, please contact Wendy Kelly (details below) and we will do our best to accommodate you.

**For further information or to register, contact:**  
**Wendy Kelly of Nexus Primary Health**  
**wendyk@nexusprimaryhealth.org.au**  
**0488 541 439**





**Broadford**  
Secondary College

# BROADFORD SECONDARY COLLEGE

## SCHOOL-WIDE POSITIVE BEHAVIOUR EXPECTATIONS

	LEARNING AREAS	OUT IN THE YARD	IN THE COMMUNITY	ALL SETTINGS	DIGITAL SPACE
<b>BRING YOUR BEST</b>	<ul style="list-style-type: none"> <li>Be on time for class with your equipment</li> <li>Do your best work and take pride in your work</li> <li>Be prepared to have a go</li> </ul>	<ul style="list-style-type: none"> <li>Being responsible for the school environment</li> <li>Be inclusive of others</li> <li>Going to class when the bell sounds</li> </ul>	<ul style="list-style-type: none"> <li>Represent the school with pride</li> <li>Offering to help members of our community</li> </ul>	<ul style="list-style-type: none"> <li>Wear uniform with pride</li> <li>Model the school values</li> <li>Call out poor behaviour</li> </ul>	<ul style="list-style-type: none"> <li>Use the internet as a learning resource</li> <li>Submitting work via Compass by the due date</li> <li>Having our devices charged and ready each day</li> </ul>
<b>BE SAFE</b>	<ul style="list-style-type: none"> <li>Be safe when moving around the class</li> <li>Use furniture correctly</li> </ul>	<ul style="list-style-type: none"> <li>Play safely with others</li> <li>Play games in appropriate spaces</li> <li>Remain on the school grounds</li> </ul>	<ul style="list-style-type: none"> <li>Listen to trusted adults</li> <li>Be aware around roads and public transport</li> </ul>	<ul style="list-style-type: none"> <li>Be mindful of ourselves and our surroundings</li> <li>Follow and observe the school rules</li> <li>Report bullying to teachers</li> </ul>	<ul style="list-style-type: none"> <li>Informing a trusted adult if we have trouble online</li> <li>Keep passwords secure</li> </ul>
<b>BE RESPECTFUL</b>	<ul style="list-style-type: none"> <li>Follow teacher's instructions</li> <li>Respecting the learning space</li> <li>Respect others right to learn</li> </ul>	<ul style="list-style-type: none"> <li>Showing friendly attitudes toward others</li> <li>Standing up for others</li> </ul>	<ul style="list-style-type: none"> <li>Be mindful of the needs of people in the community</li> <li>Use appropriate language on public transport</li> <li>Respect the law</li> </ul>	<ul style="list-style-type: none"> <li>Address everybody with respect</li> <li>Use respectful language</li> <li>Being respectful of others right to learn</li> </ul>	<ul style="list-style-type: none"> <li>Take care of devices</li> <li>Report cyber-bullying to an adult</li> <li>Make positive contributions about others</li> </ul>