



# BROADFORD SECONDARY COLLEGE NEWSLETTER

No 2

February 16th

## COMING EVENTS

### February

Wed 21st  
Whole School  
Welcome BBQ

Fri 23rd  
School Photo Day  
Order Through  
Compass

### March

Fri 1st  
Photo Catch up

Tue 5th  
Southern Ranges  
Swimming

Mon 11th  
Labour Day  
Public Holiday

Wed 13th to 25th  
NAPLAN

Fri 15th  
Hume Swimming

Thur 28th  
Last Day of Term  
Finish 2.30pm

## PRINCIPAL'S REPORT

Congratulations to Ridley House for winning this year's swimming carnival. For many years Piper House has dominated at these events, so it's great to see other houses getting into the competitive spirit. The weather was extremely hot, the pool being a welcome relief for many students. Lawn games and the limbo were great alternatives for students who either don't enjoy swimming or as another way to earn house points. Thanks to the VCEVM students who were very proactive in ensuring students had enough sunscreen, organised, and cooked the free BBQ and monitored the lawn games.

Unfortunately, due to the summer storm and power outages earlier this week, our whole school BBQ has been postponed until next week Wednesday (21/2/24). Everyone is welcome to attend, it's a great way for families to meet and greet staff and other families. An information session on how to use Compass will be available, as well as a Senior School information session. Our School Captains will be mingling and eager for a chat and a BBQ dinner will be provided. I look forward to seeing you there next week, fingers crossed the weather is kind to us.

Again, I remind families that students are to be always in full school uniform. We are seeing an increase in leggings and black skirts (shorts), both are not considered uniform items. Plain black shorts or track suit pants are acceptable items. Hoodies are never acceptable as an alternative, if school jumpers are in the laundry, due them being an OH&S hazard. If students wish to be sun smart and wear a hat, we have a BSC cap and beanie available for sale at All Things Uniform. Being in uniform puts all students on a level playing field and develops a sense of pride and belonging. I ask families to support the school where uniform is concerned, please.

Continued...

Pinniger Street

PO Box 108

Broadford 3658

Tel: 03 5784 1200

<https://broadfordsc-vic.compass.education/>

Principal: Ms Tania Pearson

## PRINCIPAL'S REPORT continue

On Monday 19<sup>th</sup> February, we will conduct our first school assembly to welcome all new and returning students to the school year and to remind students of our expectations and school values. This assembly will be conducted by our school captains and held in the stadium at 9:00am. Parents are welcome to attend.

On Friday 23<sup>rd</sup> February students will be having their school photos taken. Information on how to order photos will be sent out via Compass. Any student absent on this day will have the opportunity for a catch-up photo the following week on Friday 1<sup>st</sup> March.

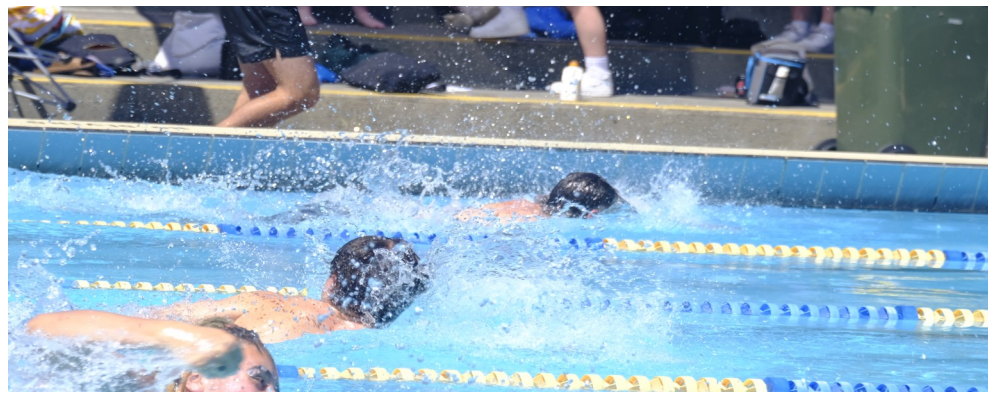
Tania Pearson













## CONVEYANCE ALLOWANCE

The conveyance allowance is a form of financial assistance to help families in rural and regional Victoria with the cost of transporting their children to their nearest appropriate school/campus. The conveyance allowance is available to eligible students travelling by public transport, private car and private bus. The conveyance allowance is also available to eligible students whose nearest school is not serviced by a free school bus.

### Eligibility criteria:

The eligibility criteria varies depending on the type of school attended and where it is located.

Students attending a government or non-government school must:

- Attend their nearest government or non-government school/campus appropriate to their year level at which admission is permissible
- be enrolled at a school/campus outside Melbourne's metropolitan conveyance boundary
- reside 4.8km or more by the shortest practicable route from that school/campus attended
- be of school age (5 to 18 years old at time of application) and reside in Victoria.

### Please follow the link:

<https://www.education.vic.gov.au/PAL/conveyance-allowance-form-1-car-private-travel.docx>

**Closing Dates:** Term 1 – 08 March 2024

Term 2 – 07 June 2024

Term 3 – 30 August 2024

Term 4 – 24 November 2024

## CSEF APPLICATIONS

Camps, Sports and Excursion Fund (CSEF) is available to assist eligible families to cover the costs of school trips, camps and sporting activities.

If you hold a valid means-tested concession card or are a temporary foster parent, you may be eligible. The annual amount is \$225 for secondary students. Eligibility date is 30th January 2024.

Parent Applications **closing date is 28 June 2024**. Contact the General Office or download a form from:

<https://www.education.vic.gov.au/PAL/CSEF-application-forms.docx>

Please phone the General office if you have any queries.



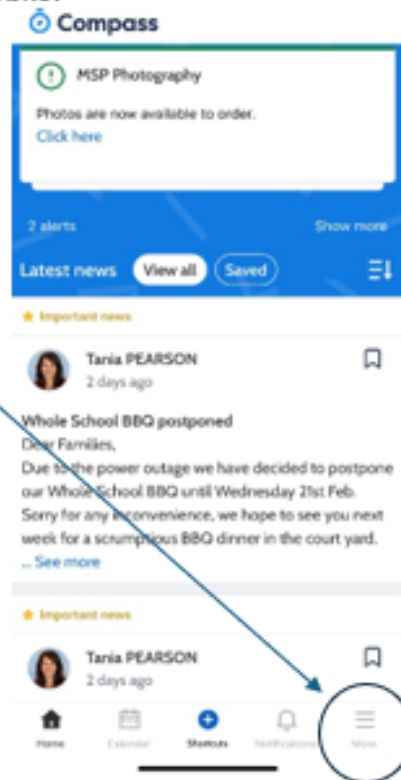
Compass curriculum contributions are now available for payment on your compass app on mobile or pc and we encourage you to [take a look](#).

Your contributions are vital to the running of our school. They go towards providing the students with up-to-date learning materials, such as textbooks and interactive tools, and running activities and programs that wouldn't be able to happen without those contributions. The school try to keep the contributions as low as possible and is grateful for all support received.

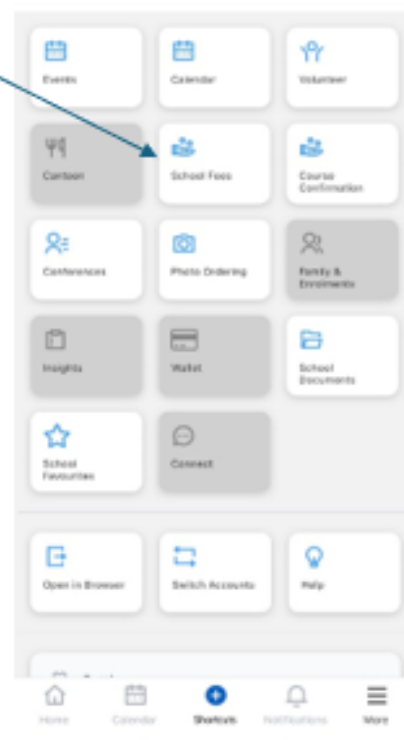
Please continue to support the school as much as you can – it really does benefit the students.

To access Curriculum Contributions for 2024 on mobile:

- 1) Open your Compass App and click on the "More" option at bottom of the screen

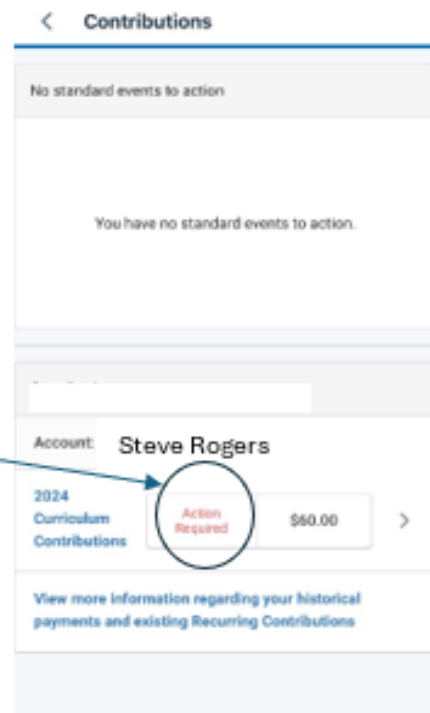


- 2) Select "School Fees" tile on the [screen](#)





- 3) Select 2024 Curriculum Contributions  
**Action Required** to access fees screen



< Contributions

No standard events to action

You have no standard events to action.

Account: Steve Rogers

2024 Curriculum Contributions	Action Required	\$60.00	>
-------------------------------	-----------------	---------	---

[View more information regarding your historical payments and existing Recurring Contributions](#)

- 4) You will see a short explanation about  
the contributions, click continue



< Contributions

Dear parent/guardian,

Broadford Secondary College is looking forward to another great year of teaching and learning and would like to advise you of our voluntary financial contributions for 2024. Schools provide students with free instruction to fulfill the standard Victorian curriculum and we want to assure you that all contributions are voluntary. Nevertheless, the ongoing support of our families ensures that our school can offer the best possible education and support for our students. We want to thank you for all your support, whether that's through fundraising or volunteering your time. This has made a huge difference to our school and the programs we can offer.

Within our college the support in the past has allowed us to upgrade the tennis and basketball courts, add new locker bays, new shade sails around the college, repair and paint classrooms, whilst continually providing maintenance works and upgrades around the college.

Please complete the attached form and return to the school by Friday 08th December 2023 so the school can prepare accordingly.

For further information on the Department's Parent Payments Policy please see a one-page overview attached.

For further information on the Department's Parent Payments Policy please see a one-page overview attached.

**Continue** >

Save & close



- 5) The screen will now show a list of all the contributions for the student.

Each year level fees may be different so if you have students in different years, fees may vary

**Contributions**

2024 Curriculum Contributions

STEP 1  
Payment

24 Curriculum Contribution Year	\$ 60
Items and activities that students use, or participate in, to access the Curriculum	\$60.00 <a href="#">Remove</a>
24 Locks, Lockers, Locker Maintenance -	\$ 15
24 Locks, Lockers, Locker Maintenance - <a href="#">Contribution / Donation</a>	\$15.00 <a href="#">Remove</a>
24 Other Contributions Year 11 -	\$ 75
School grounds maintenance and improvements (suggested amount only) <a href="#">Contribution / Donation</a>	\$75.00 <a href="#">Remove</a>

- 6) The amount to pay will be displayed on the Screen and you can enter card details below. If you wish to pay via another payment method, please call the school office for details.

- 7) Save card details for convenience if you wish, by ticking the "save this card" box.

- 8) Click "Process" to pay

**Contributions**

Payment Mode

Amount to pay **\$150.00**

Pay in full now

Payment Method

New credit card

Card number

Full name

MM/YY CVC

Save this card

We use CompassPay.com as our payment processing gateway. In clicking the relevant "Confirm and Pay" button to the right, you agree for your credit card to be charged by CompassPay.com on behalf of your school. In processing a transaction with us, you agree to our website and payment policies available at <http://compass.edu.au/policy/>.

**\$150.00**

[Process](#)

Thank you for  
your support!!



## Notice of Election and Call for Nominations

An election is to be conducted for members of the School Council of Broadford Secondary College. Nomination forms may be obtained from the school and must be lodged by **4.00 pm on Friday 1st March 2024**.

If a ballot is required, the ballot will be sent out and then the poll will close at **4.00 pm on Friday 15<sup>th</sup> March 2024**.

Following the closing of nominations, a list of the nominations received will be posted at the school.

The terms of office and membership categories in each membership category open for election are as follows:

(we will confirm the number of vacancies in each category at a later date, but please feel free to nominate for a position in the meantime)

MEMBERSHIP CATEGORY	TERM OF OFFICE	NUMBER OF POSITIONS
Parent member	From the day after the date of the declaration of the poll in 2024 to and inclusive of the date of the declaration of the poll in 2026	TBC
School Employee	From the day after the date of the declaration of the poll in 2024 to and inclusive of the date of the declaration of the poll in 2026	TBC
Community Member	From the day after the date of the declaration of the poll in 2024 to and inclusive of the date of the declaration of the poll in 2026	TBC
Student Member	From the day after the date of the declaration of the poll in 2024 to and inclusive of the date of the declaration of the poll in 2026	TBC

### What is a school council and what does it do?

All government schools in Victoria have a school council. They are legally constituted bodies that are given powers to set the broad directions of a school in accordance with their constituting Order and the *Education and Training Reform Act 2006*. In doing this, a school council is able to directly influence the quality of education that the school provides for its students.

### Who is on the school council?

For most Secondary School Councils, there are three possible categories of membership:

**A mandated elected Parent member category** – more than one-third of the total members must be from this category. DET employees can be Parent members at their child's school as long as they are not engaged in work at the school

**A mandated elected DET employee member category** – members of this category may make up no more than one-third of the total membership of school council. The principal of the school is automatically one of these members

**An optional Community member category** – members are co-opted by a decision of the council because of their special skills, interests or experiences. DET employees are not eligible to be Community members.

## Notice of Election and Call for Nominations

For all schools with a year 7 and above cohort, there is a fourth category of membership:

**A mandated elected Student member category, 2 positions.**

Generally, the term of office for all members is **two years**. The term of office of half the members expires each year, creating vacancies for the annual school council elections.

### Why is parent membership so important?

Parents on school councils provide important viewpoints and have valuable skills that can help inform and shape the direction of the school.

Those parents who become active on a school council find their involvement satisfying and may also find that their children feel a greater sense of belonging.

### Do I need special experience to be on school council?

Each member brings their own valuable life skills and knowledge to the role. However, councillors may need to develop skills and acquire knowledge in areas that are unfamiliar to them. What you do need is an interest in your child's school and the desire to work in partnership with others to help shape the school's future.



## EXPRESSIONS OF INTEREST

Students with their Junior Firearm License who would be interested in joining the Broadford Secondary College's trap shooting team and participate in three Inter-School Competitions please get in touch with Chloe Price – [chloe.price@education.vic.gov.au](mailto:chloe.price@education.vic.gov.au)





## VET NEWS

We're excited to start our Vocational Education and Training (VET) programs with 120 students from Broadford Secondary College (BSC). This year is all about growing, developing skills, and discovering exciting opportunities.

Engaging in Vocational Education and Training (VET) courses significantly benefits students. They have the opportunity to gain practical skills tailored to their desired professions.

Ensuring students are well-prepared for the workforce.

The Trainers guide students through hands-on experiences, helping them learn useful skills for their future careers. This means they won't just be studying from books—they'll be doing things that they can use in real-life work situations.

Completing a VET course can open doors to further education and great opportunities in the working world.

Our diverse range of VET courses cover lots of different fields, giving students a chance to explore their interests and pave their way for future career paths.

In 2024 we have students enrolled to complete Acting, Active Volunteering, Health Services Assistance, Animal Care, Automotive, Beauty, Building and Construction, Electrotechnology, Engineering, Equine, Hospitality, Make up, Plumbing and Salon Assistance.



## Well-being

[wɛlˈbiːɪŋ] noun

*the state of being comfortable, healthy, or happy.*

At Broadford Secondary College, we believe that when students are physically, socially and emotionally healthy, they are able to learn more effectively and deal with life's challenges.

Our school Wellbeing Team supports the diverse needs of our students and promotes connection between them, their families, and the wider school community. We provide individual support, as well as deliver a range of Wellbeing programs that support ongoing social and emotional development through college programs and events.

### Duties of the Wellbeing Team include:

- Build students capacity who have personal, social or emotional problems which are affecting their ability to participate fully at school
  - Linking students and/or their families with outside resources and agencies (as necessary) and to provide ongoing support to students that are referred
  - Interpreting the problems/needs of individuals to teachers and coordinators so that the College can respond effectively to each students' needs
  - Supporting the wellbeing role of all teachers
  - Health promotion and primary prevention
- Initiating appropriate proactive programs in the area of wellbeing

### Meet the team:



**Aaron Tilley**  
Wellbeing  
Coordinator  
Thurs  
Monday-Friday



**Bronwyn Kinnear**  
Youth Counsellor  
Monday– Friday



**Maree Gray**  
Youth Worker  
Mon, Tues, Thurs, Fri



**James Pateras**  
Youth Worker  
Mon, Weds,



**Sarah Gething**  
School Nurse  
Practitioner  
Tue & Thurs



**Beccy Acott**  
Re-Engagement Officer  
Tue & Fri



**Regula McKinlay**  
Mental Health  
Mon-Thurs



## Careers

Chelsea Martin has secured and recently commenced a school-based Hairdressing apprenticeship at Arlo Hair in Kilmore. Chelsea had previously completed a Certificate II in Building as part of her VET studies at Broadford Secondary and showed real promise in the industry. But she always had a dream to work in a hairdressing salon and she secured a work placement at Arlo Hair and immediately knew that the hairdressing industry was her preferred career pathway. During her work placement, Chelsea asked her employer Brooke Stead about completing a school-based apprenticeship at the salon. Having seen Chelsea's potential, Brooke fully supported her request. Chelsea will work two days a week at Arlo Hair and attend Biba Academy in Fitzroy as part of her training program .

Congratulations Chelsea and good luck.

Picture - Brooke Stead (left) with Chelsea Martin



## Mobile Phones

A reminder that the Department of Education has in place a mobile phone ban that requires students who bring mobile phones to school to have them switched off and securely put away during school hours.

The department is requiring all schools to ensure this ban is in place and enforced from the start of the 2024 school year.

The ban applies equally to all government schools right across the state. This helps ensure that school is a learning environment free from unnecessary distractions and disruptions.

By ensuring mobile phones are kept away at recess and lunch times, students can interact with each other face-to-face, without the distractions and social pressures that mobile phones can cause.

I ask for the support of all our families, staff, and students in continuing to support the implementation of this policy in our school.

### Further information

**Exceptions:** For a small number of students with particular health needs, an exception to the policy may be granted. Please contact the relevant school manager or coordinator if you would like to discuss this.

**Emergencies:** In the event of an emergency or if you need to immediately contact your child, I ask that families contact the school office who will pass on a message as required.

**School mobile phone policy:** A copy of our school's local mobile phone policy, which implements the government's mobile policy in line with our local context, is available here:

<https://broadfordsc.vic.edu.au/our-school/#policies>

**Parent support:** The [Mobile phones in schools webpage](#) provides links to resources for families to help them balance their children's time using mobile phones.

If you have further questions, please contact the General Office on 5784 1200.

Tania Pearson

Principal



## Attendance Information

If you require your student to depart school early, can you please provide a *signed note* for the student to hand to their teacher, this will enable them to leave the classroom and make their way to the General Office.

Parents are asked to collect their student from the General Office and sign them out via the *Compass Kiosk*.

Can parents ensure that all attendance be updated before 12pm on the day of the student's absence.

There are several ways to do this.

Call the schools attendance line- **57841200 – extension 1.**

Call the general office- **57841200.**

Log onto Compass and update attendance- **on homepage find + add attendance note-then add reason, date, and time.**

Email [absences@broadfordsc.vic.edu.au](mailto:absences@broadfordsc.vic.edu.au) or [broadford.sc@education.vic.gov.au](mailto:broadford.sc@education.vic.gov.au)

An unexplained absence message is sent to families at 12.45pm daily- **follow the link to add attendance note.**

Late arrivals to school need to enter via the General Office and sign in on the *Compass Kiosk* using their *Compass Card*, we also ask that you provide a written note to explain why the student is late. Students who can't use the *Compass Kiosk* are asked to speak to the general-office staff and they will sign them in.

Notes and Medical Certificates can be handed to staff in the General Office.

**Thank you.**

### Child safety and wellbeing at Broadford Secondary College: information for families and the school community

The Victorian Government has announced new [Child Safe Standards](#) to further strengthen child safety across organisations, including schools. The new standards recognise the critical importance of families and the broader school community in maintaining and promoting child safety and wellbeing.

Broadford Secondary College has reviewed and updated our child safety policies and procedures to ensure they meet the requirements of the new standards. These are available to view on our school's website, via or at the school's front office].

We are committed to continuous improvement in our approach to child safety and wellbeing and welcome feedback from families and members of our school community on ways we can further strengthen our child safety policies, procedures and practices.

If you have any suggestions, comments or questions, please contact the Principal, or one of the Assistant Principals.

# Broadford Secondary College 1:1 Device Program 2024



HP PROBOOK 445 G10

LENOVO 500W

At Broadford Secondary College, we recognise the increasing presence and importance of technology in students lives. Technology bridges the gap between school and home and provides students with fun and engaging learning opportunities. That is why we are steadfast in our commitment to being a 1:1 device school.

In 2024, we strongly encourage students to own a 1:1 device that will accompany other essential learning materials each lesson. As a school, we are no longer recommending i-Pads for student use at BSC. Below you will find two school recommended devices that can be purchased through the JB-HIFI Parent Portal which is linked to our school.

FEATURES	Price	Screen Size	Pen	Supports Adobe Suite	Operating System	Battery Life	Memory & Storage
HP PRO BOOK 445 G10	\$978	14-inch	No	Yes	Windows	Up to 14 hours	8GB RAM 256GB SSD
LENOVO 500W GEN 4	\$772	12.2-inch	Yes	Yes	Windows	Up to 11 hours	8GB RAM 256GB SSD

\*If your child is interested in undertaking art based subjects, it is strongly recommended that families consider purchasing a device with a pen that supports the Adobe Suite

### How to purchase a device through the JB-HIFI portal

- Here's how it works:
1. Go to [www.jbeducation.com.au/byod/](http://www.jbeducation.com.au/byod/)
  2. Enter the BYOD code as supplied by your school.

**BroadfordSec2024**

3. Once logged in, select a student program.
4. Choose your preferred delivery method.
5. Follow the prompts to select your products, accessories and nominate for insurance. Enter your details to proceed.
6. Choose a payment method and complete your order. No surcharges on credit card purchases.

If you have any questions, we're here six days a week:

Web: [www.jbeducation.com.au/byod/](http://www.jbeducation.com.au/byod/)  
 Call: 1300 730 548  
 Email: [byodsupport@jbhifi.com.au](mailto:byodsupport@jbhifi.com.au)

### Frequently Asked Questions

Is it compulsory for students to have a 1:1 device?

While it is not compulsory for students to have a 1:1 device, it is strongly recommended. With a 1:1 device, students will be able to access the full range of learning opportunities available to them at BSC.

Will students be using their devices in every subject, every day?

Each lesson is composed of a variety of learning activities, some that involve devices whilst others do not. Therefore at times there may be lessons where devices aren't used by students, however it is recommended that students bring their device to every lesson.

Where will students store their devices when it is not in use?

It is strongly recommended that students purchase a protective case to store and secure their device. Devices should be stored in student lockers during break times.

Can a student add their own software to their device?

Specific software required for each subject area can be purchased and installed at the discretion of the family.

Will my child be able to print at school?

Yes. Students will be able to print from school.

Is my child expected to take their device home every day?

Yes, students are expected to take their device to and from school each day.

What IT support is provided by the school?

The school will provide support to connect your child's device to the school network and basic troubleshooting. Any physical repairs to the device will be the responsibility of the family.

### What about i-Pads?

As a school, we are no longer recommending students purchase i-pads as their 1:1 device. i-Pads restrict the use of a number of software platforms accessed by students at BSC, most notably the G-Suite. In our experience, students have expressed their preference to have a keyboard, particularly as writing demands increase from Year 7 to 12. Finally, i-Pads provide opportunity for greater distractions from learning as the school has limited ability to monitor inappropriate use of apps such as Snap Chat and various online games.

### Can I recharge my device at school?

No. It is expected that students will bring their device to school each day, fully charged.

### Can my child access games on their device?

Any games or applications are not to be accessed, used or downloaded via the school network unless instructed by school staff.

### What happens if my child leaves their device at home?

It is expected that student devices will be at school everyday. Students who do not bring their device will be significantly disadvantaged as their ability to access lesson activities and materials will be compromised.

### Will the device be covered by school insurance while it is being used at BSC?

No. It is the responsibility of families to insure their device if they choose to.

### Does my home need internet access?

No. Students will be provided with access to the school network while at school, where they can access the information and basic software they require. If you do have internet access at home, you are welcome to connect the device to your internet connection.



For more information please contact Cara Fiebig - Leading Teacher or Chris Treven - Specialist Technician at BSC on (03) 5784 1200





# REGISTER NOW



**PLAY SATURDAYS  
APRIL 20TH-  
SEPTEMBER 14TH**

## AGE GROUPS

Under 9's

Under 11's

Under 13's

## NEW ADDITION:

Under 15's

Under 17's



**REGISTRATIONS  
CLOSE 15TH  
MARCH OR  
EARLIER DUE TO  
CAPACITY SO BE  
QUICK!**



## DOWNLOAD TO REGISTER



**Broadford Junior Football Netball Club**



4 h · 🌐

CALLING ALL UNDER 16 FOOTBALLERS 🏀

WE ARE GIVING ALL UNDER 16 PLAYERS FREE REGO, AND FREE PLAYING JUMPER!! 🧢

REGISTER TODAY TO BE PART OF AN AMAZING CLUB!

A promotional graphic for the Broadford Junior Football Netball Club. The background shows a group of young footballers in blue and white striped jerseys huddled together on a field. Overlaid on this image is large, bold, white text with a blue outline that reads: "FREE REGO &amp; PLAYING JUMPER FOR ALL UNDER 16 FOOTBALLERS". In the bottom right corner, there is a small logo for Broadford Secondary College, featuring a stylized blue figure and the word "BROADFORD" in blue capital letters.



# Media release



## Goulburn Valley Water recruiting for new customer panel

7 February 2024

Goulburn Valley Water is calling for customers to provide feedback and help shape future projects and priorities by registering an expression of interest for a new customer panel.

The Customer Accountability Panel will provide a key customer voice to reflect annually on progress across the 2023-28 Price Plan, which sets out GVW's key priorities and projects for the next five years.

GVW Managing Director Steve Capewell said the new panel would be a continuation of the work achieved by customers as part of the previous 2018-23 Price Plan and during consultation and development of the current plan.

"Our customer panels have provided some really important insights and valuable feedback, and we're committed to continuing to have a customer voice as we progress through our current five-year plan," Dr Capewell said.

"We are keen to work with another group of customers who will help us review progress on our commitments, and also contribute their views on future projects over the next couple of years.

"We genuinely want to engage broadly and deeply and so we encourage any customers with an interest in our water future to register their interest in selection on the panel."

The new panel will be drawn from GVW's 54 towns and will include representation from homeowners, tenants, businesses and future customers. It will also include members of the 2018-23 Annual Performance Forum and Customer Carbon Advisory Group to create a balance of fresh insights and prior experience.

The 2023-28 Price Plan is centred on four promises:

- provide reliable water and wastewater services customers can trust
- lead action and partner with communities to grow the region
- care for the environment and adapt to a future impacted by climate variability
- deliver respectful and responsive customer service, balancing affordability, value for money and fairness.

Investment in renewable energy, supporting customers experiencing financial hardship and renewing existing assets and infrastructure to ensure reliable service into the future are three of the major commitments.

For more information or to submit an expression of interest, visit <https://www.gvwater.vic.gov.au/customer-accountability-panel>

The expression of interest deadline is Friday 8 March 2024.

Media contact: Rohan Aldous  
Phone: 0447 487 582  
Email: RohanA@gvwater.vic.gov.au



# JOIN GOULBURN VALLEY WATER'S CUSTOMER PANEL



Our new Customer Accountability Panel will be a key customer voice in planning for our future and reflecting on our promises and actions.

**We're seeking expressions of interest - here's your chance to be involved.**

The panel, a broad representation of our entire customer base, will meet annually. You don't need any experience in the water sector - we'll provide everything you need to participate. Panel participants will be paid for their time.



**Find out more about the panel and submit your interest by scanning the QR code.**

Expressions of interest close Friday 8 March.



## YOUNG WOMEN IN AEROSPACE & DEFENCE: 5-Day STEM Program



**FREE** School  
Holiday Program  
(Term 1, 2, & 3)



RMIT University  
City Campus



Open to all  
VIC Secondary  
School Girls

**Join the Young Women in Aerospace & Defence 5-Day STEM program, offered during the school holidays in Terms 1, 2, and 3. Students can choose the STEM program they'd like to attend. With high demand expected, preferences will be accommodated based on availability. Apply now to secure your spot!**

### Program Outline:

- Engage in a range of activities including constructing drones, designing apps, building gliders, programming bots, and conclude with races featuring your creations.
- Participate in lectures and explore RMIT University's cutting-edge engineering facilities.
- Take part in Q&A sessions with female STEM professionals.
- Tour aerospace and defence industry-leading companies.

### The application process:

- Submit a written statement (max 500 words) or a video (max 2 mins) explaining why you should be chosen for the program.
- Students are asked to submit their applications to **WackettSTEMprogram@rmit.edu.au**

## IMPORTANT DATES

**Applications close:** Tuesday, 12 March 2024  
**Applicants notified of success:** Tuesday, 19 March 2024





Broadford  
Secondary College

# BROADFORD SECONDARY COLLEGE

## SCHOOL-WIDE POSITIVE BEHAVIOUR EXPECTATIONS

### LEARNING AREAS      OUT IN THE YARD      IN THE COMMUNITY      ALL SETTINGS      DIGITAL SPACE

- Be on time for class with your equipment
- Do your best work and take pride in your work
- Be prepared to have a go

#### BRING YOUR BEST

- Being responsible for the school environment
- Be inclusive of others
- Going to class when the bell sounds

- Represent the school with pride
- Offering to help members of our community

- Wear uniform with pride
- Model the school values
- Call out poor behaviour

- Use the internet as a learning resource
- Submitting work via Compass by the due date
- Having our devices charged and ready each day

- Be safe when moving around the class
- Use furniture correctly

#### BE SAFE

- Play safely with others
- Play games in appropriate spaces
- Remain on the school grounds

- Listen to trusted adults
- Be aware around roads and public transport

- Be mindful of ourselves and our surroundings
- Follow and observe the school rules
- Report bullying to teachers

- Informing a trusted adult if we have trouble online
- Keep passwords secure

- Follow teacher's instructions
- Respecting the learning space
- Respect others right to learn

#### BE RESPECTFUL

- Showing friendly attitudes toward others
- Standing up for others

- Be mindful of the needs of people in the community
- Use appropriate language on public transport
- Respect the law

- Address everybody with respect
- Use respectful language
- Being respectful of others right to learn

- Take care of devices
- Report cyber-bullying to an adult
- Make positive contributions about others